



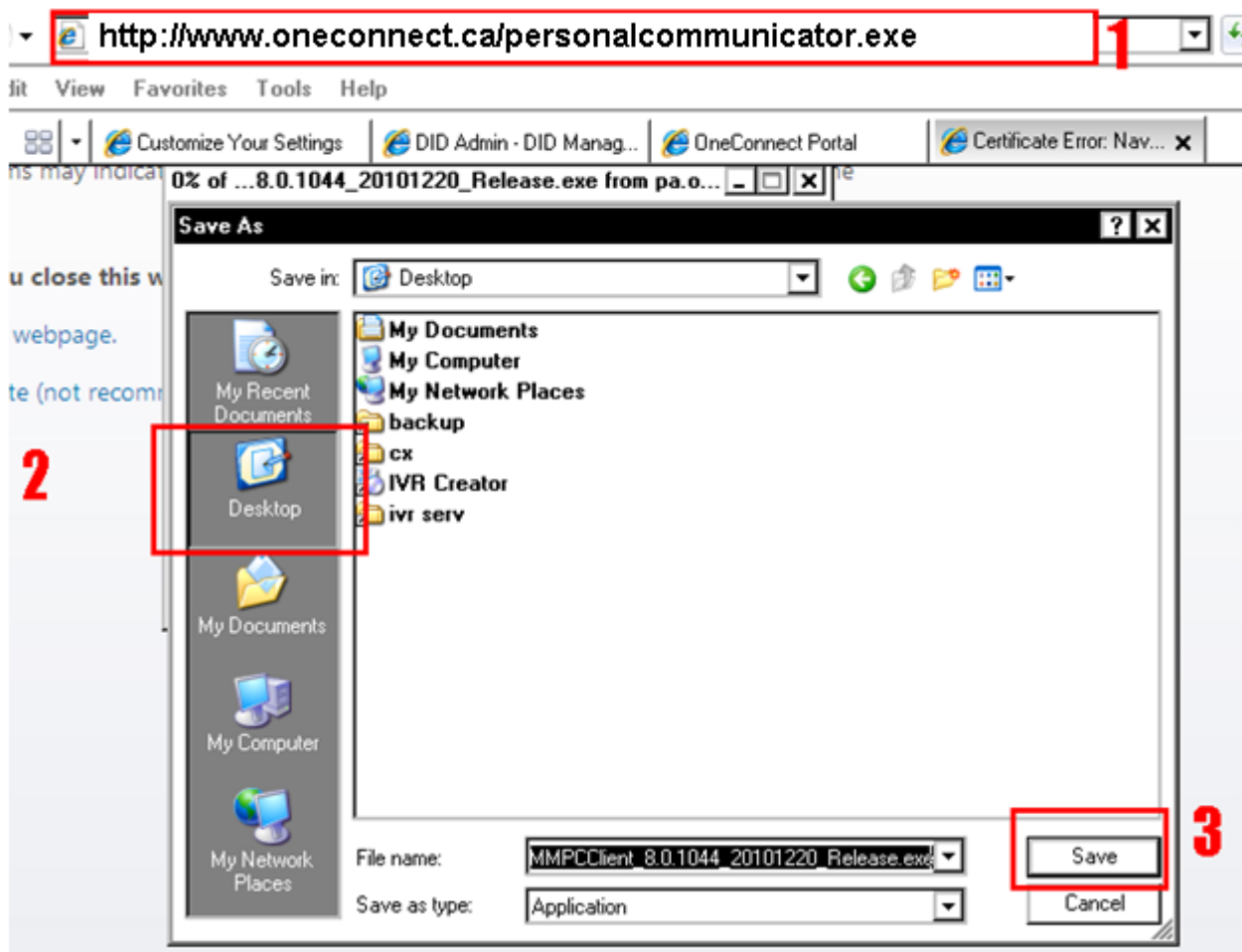
Getting Started with the A2

Setting up PC Client

Step 1 - Download

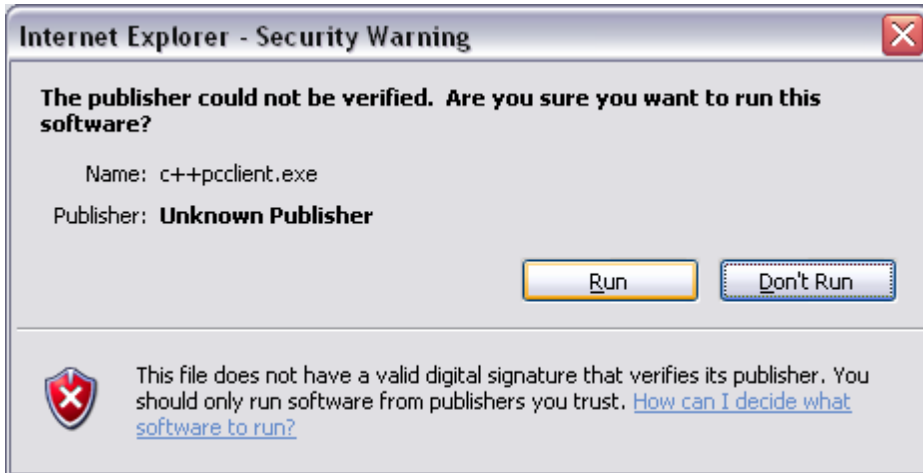
- Go download the new software from the link below and install it on your computer.

It will overwrite the previous version: <http://www.oneconnect.ca/personalcommunicator.exe>

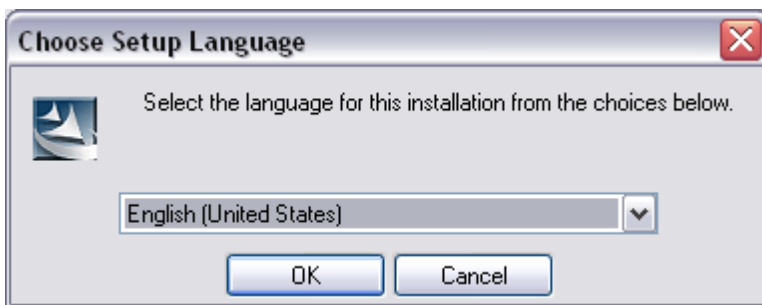


Step 2 – Install

- Double-click the icon on your desktop and select RUN.

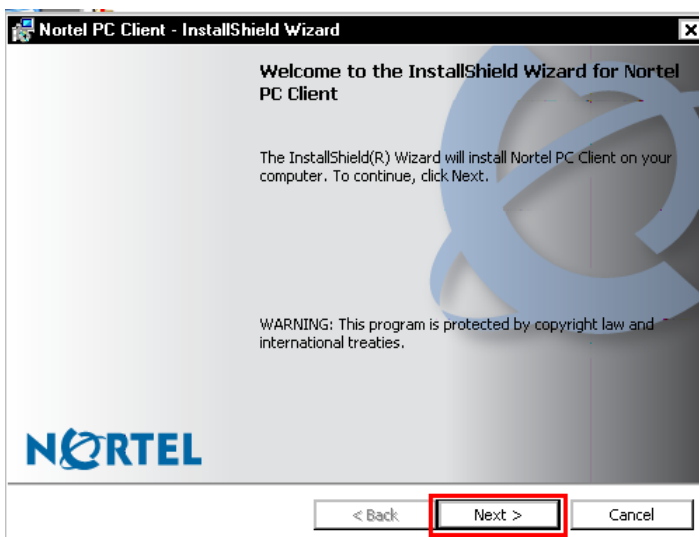


- Choose your setup language + click OK.



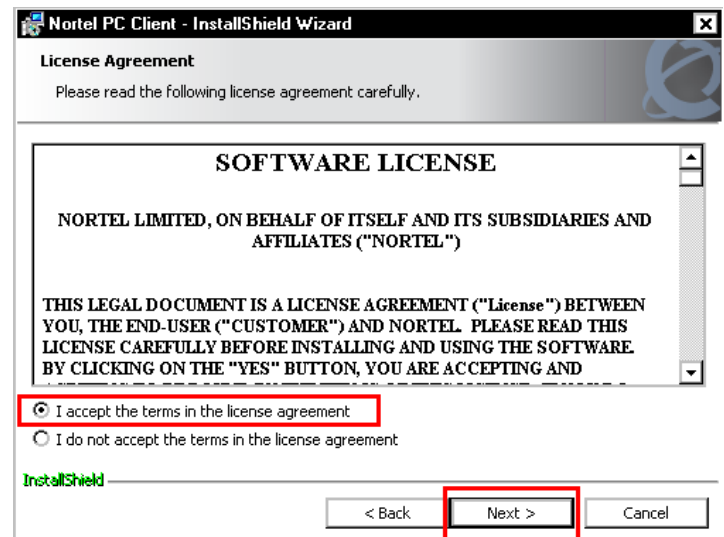
- Follow the screens below:

1



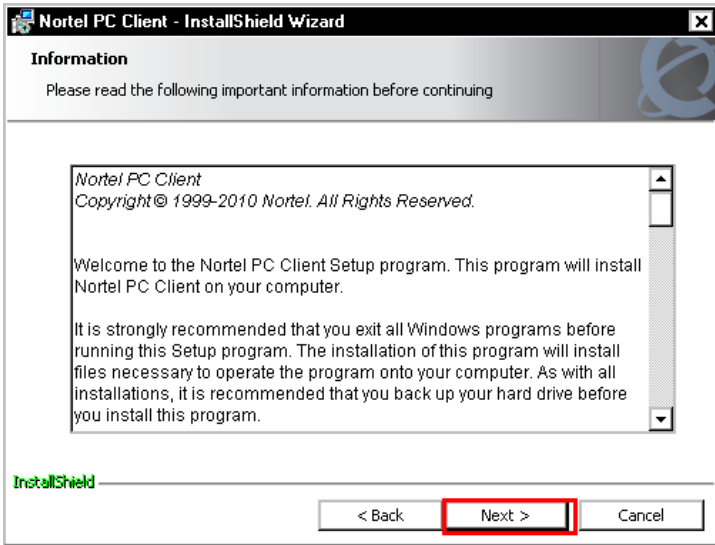
CLICK NEXT

2



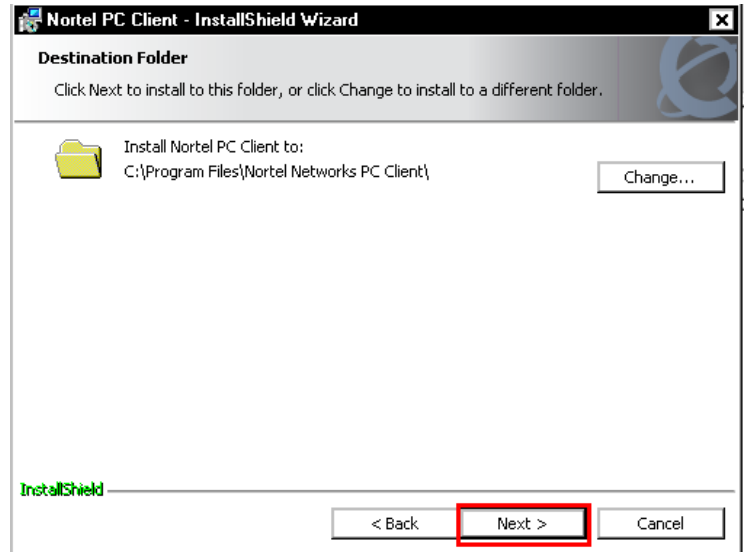
ACCEPT LICENSE AGREEMENT AND CLICK NEXT

3



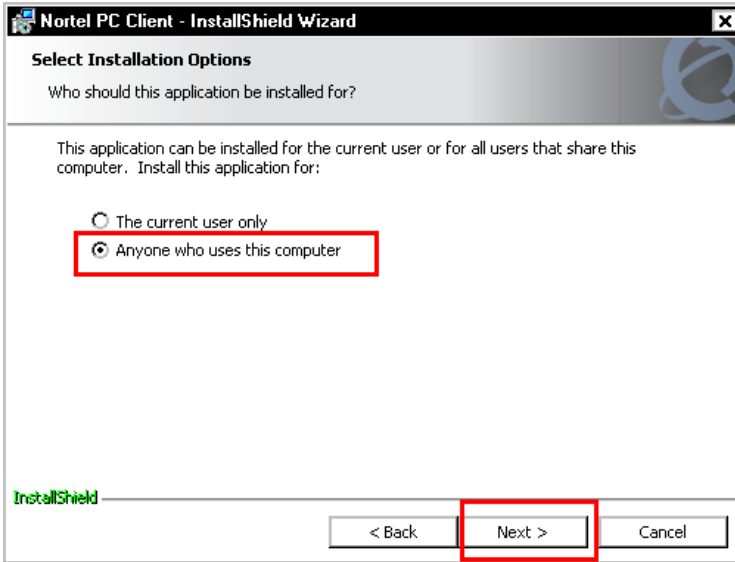
CLICK NEXT

4



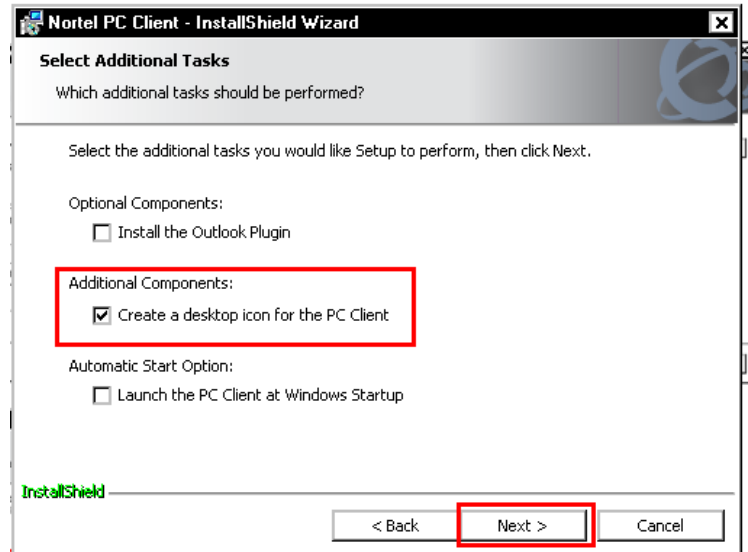
CLICK NEXT

5



SELECT ANYONE WHO USES THIS COMPUTER AND CLICK NEXT

6

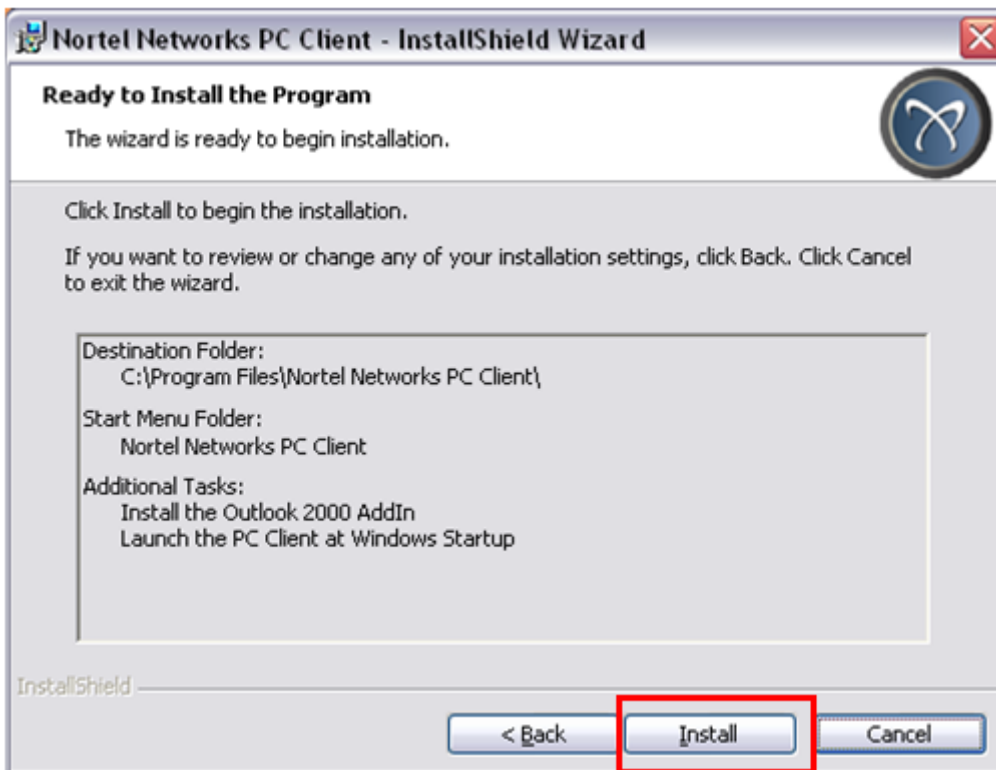


SELECT WHICH OPTIONS YOU WOULD LIKE TO INSTALL:

- Optional Components-Installs 'click-to-call' your Microsoft Outlook contacts plug-in
- Additional Components -Creates a desktop icon for PC Client
- Automatic Start Option-Starts PC Client automatically every time you start Windows

Click 'Next >'

- Click **INSTALL** on the last screen and wait for the installation to complete.



Step 3 – Launch

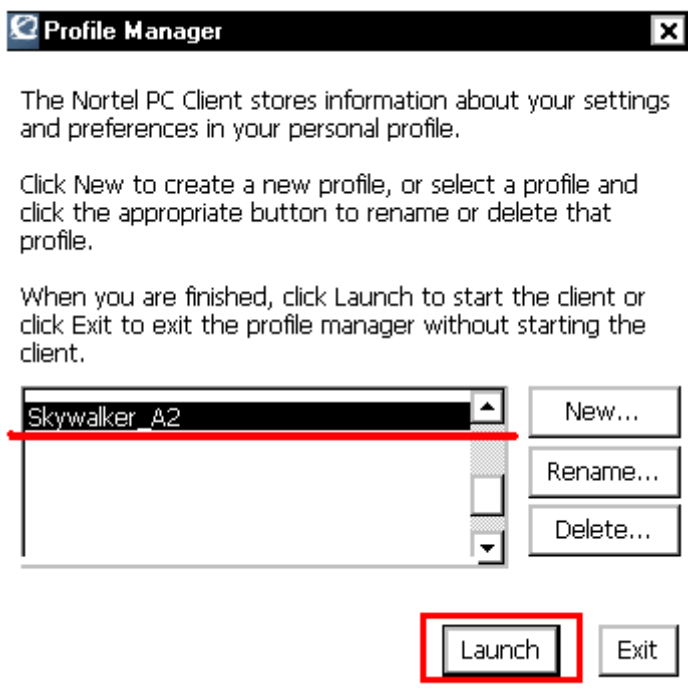
- Launch the program by double-clicking the icon.
- From the Profile options click “New”:



- Give your new profile a name and click OK:



- Now select your newly created profile and click LAUNCH:



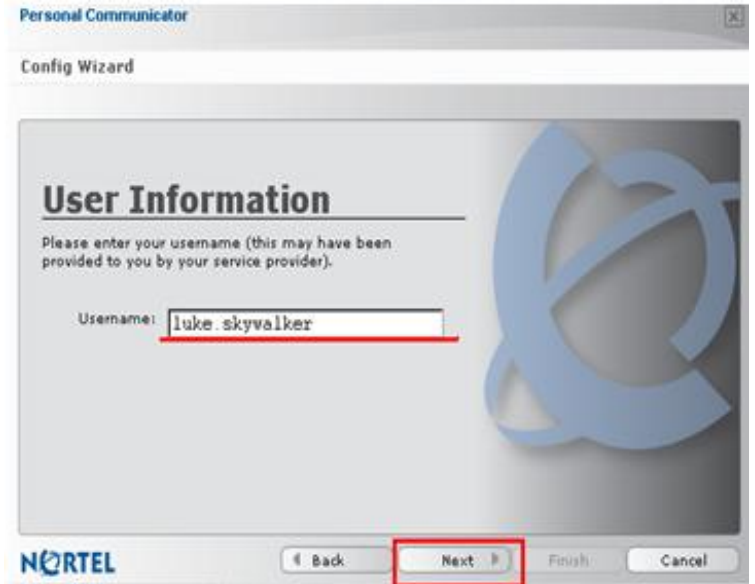
• Follow the Screens Below:

1



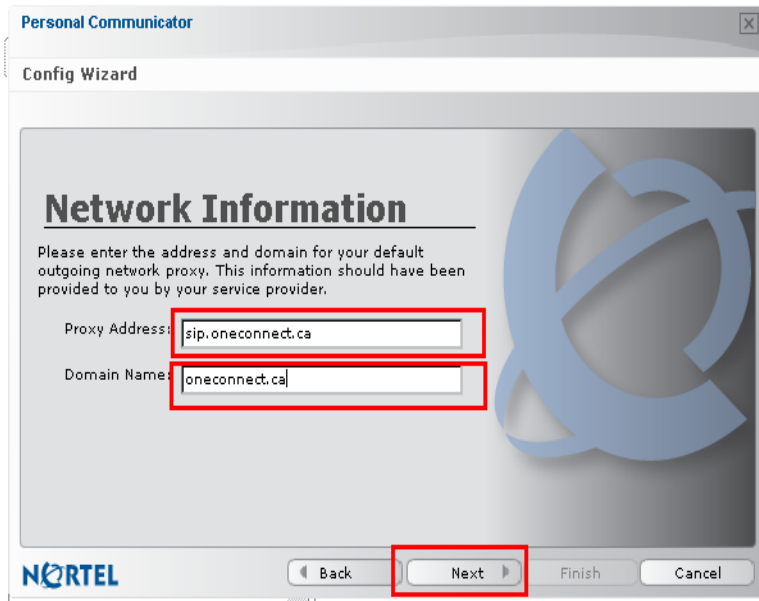
CLICK NEXT

2



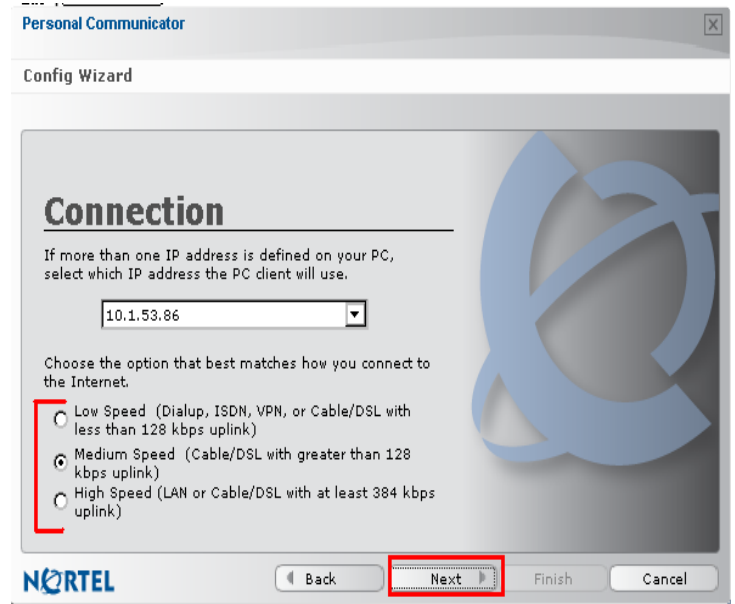
ENTER YOUR SIP ID, WITH NO DOMAIN

3



- BESIDE PROXY ADDRESS ENTER: sip.oneconnect.ca
- BESIDE DOMAIN NAME ENTER: [your domain name]
- CLICK NEXT

4

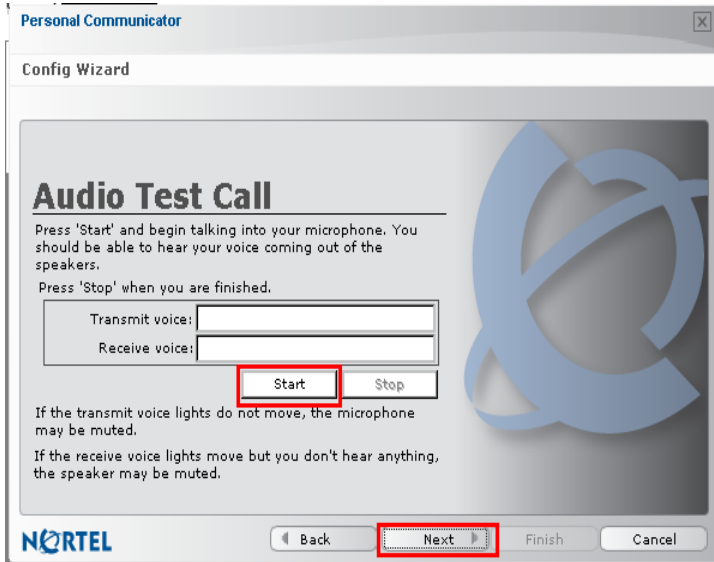


SELECT YOUR INTERNET SPEED

DO NOT TOUCH THE IP DROPDOWN

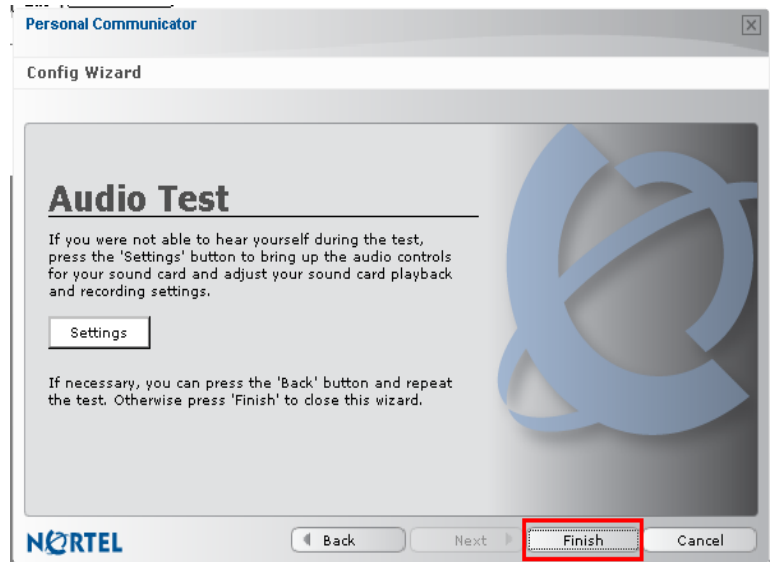
CLICK NEXT

5

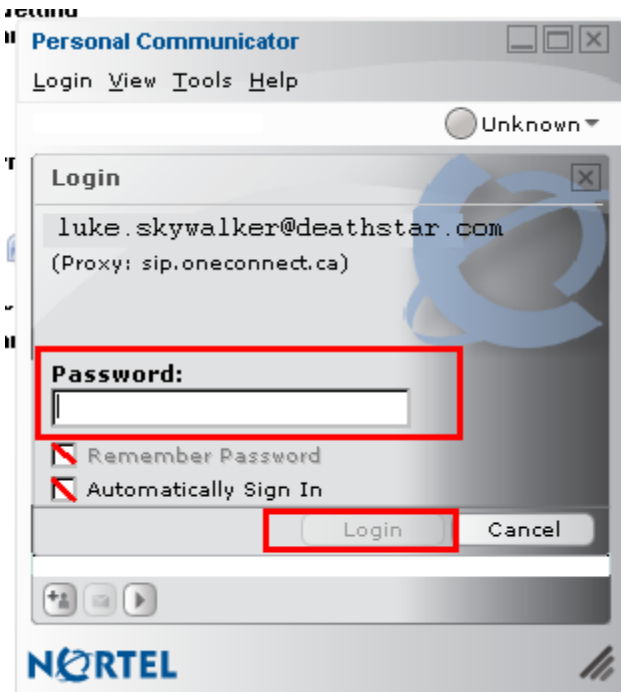


- MAKE SURE YOUR HEADSET/ MICROPHONE ARE PLUGGED IN
- CLICK START AND TEST THE MIC AND HEADSET AUDIO
- WHEN FINISHED CLICK NEXT

6



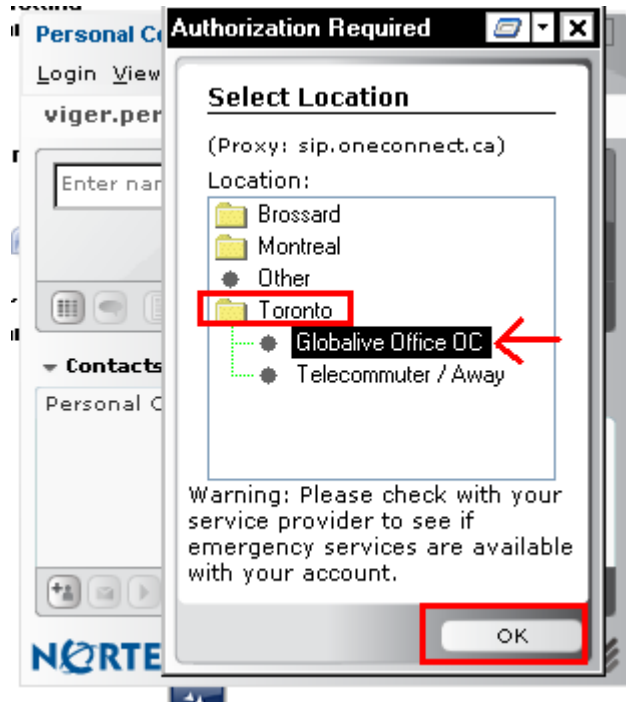
CLICK FINISH



- ENTER YOUR PASSWORD
- CHECK 'Automatically Sign In'
- CHECK 'Remember Password' TO REMEMBER THIS INFORMATION
- **CLICK LOGIN**

- When you log in, click OK on all the pop-ups asking for certification.

- IF APPLICABLE Select your location and hit OK:



You are now ready to start making and receiving calls.

Email orders@oneconnect.ca with any questions that arise.